



Cooper Road, Windlesham

£695,000



Cooper Road, Windlesham, Surrey

Four bedroom detached house in a non estate position with nearby cut through to the Field of Remembrance playing fields with woodland walks, new hub and coffee shop.

FEATURES

- Detached
- Non estate
- Easy access to Windlesham Field of Remembrance
- Walking distance to village shops
- Modernised family home
- Gas central heating
- Double glazing

ACCOMMODATION

- Entrance hall
- Downstairs cloakroom
- Three reception rooms
- Large utility (converted from rear of garage)
- Full width conservatory
- Open plan fitted kitchen
- Four bedrooms
- Family bathroom

OUTSIDE

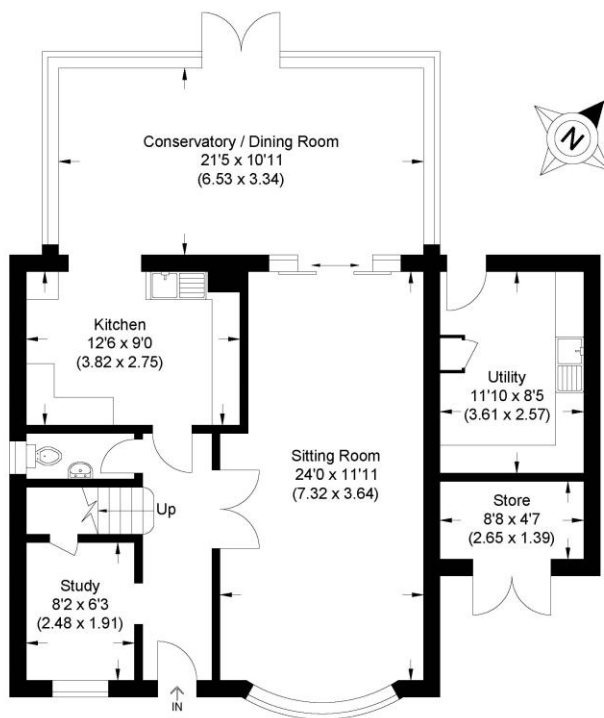
- Gravel driveway
- Garage converted to store room and utility room
- Rear garden with patio

EPC RATING

C

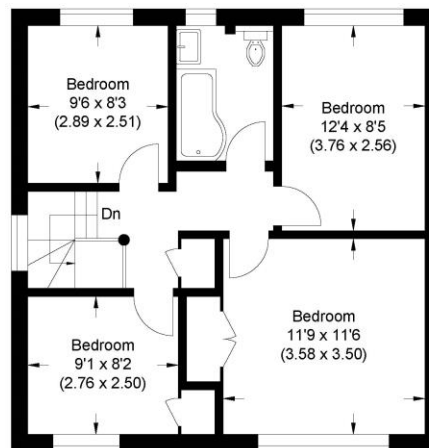






Ground Floor

Approximate Gross Internal Area:
141.30 sq m / 1521 sq ft
Store Area : 3.9 sq m / 42 sq ft
Total : 145.2 sq m / 1563 sq ft



First Floor

Illustration for identification purposes only, measurements are approximate, not to scale.

Disclaimer: We wish to inform prospective purchasers that we have prepared these sales particulars as a general guide. We have not carried out a detailed survey, nor tested the services, appliances and specific fittings. Room sizes are approximate and rounded; they are taken between internal wall surfaces and therefore include cupboards / shelves, etc. Accordingly, they should not be relied upon for carpeting, curtains / blinds and kitchen equipment, whether fitted or not, are deemed removable by the vendor unless specifically itemized within these.

Postcode for sat nav: **GU20 6EA**



NEWTON ROWE
SALES & LETTINGS

The Old Dairy, 7 Updown Hill, Windlesham, Surrey GU20 6AF
enquiries@newtonrowe.co.uk | 01276 986900